



APPALACHIAN  
MOUNTAINS  
JOINT VENTURE



## FOCAL LANDSCAPE INITIATIVE



The Appalachian Mountains Joint Venture (AMJV) partnership is focused on preserving, managing, and restoring diverse, healthy forest habitats in the region to benefit not only birds, but the diversity of Appalachian plants and wildlife.

The Focal Landscape approach **strategically targets capacity and resources** to high-priority regions, **maximizing conservation impacts** and making concrete steps toward improving habitat for priority species.

The goal of this approach is to support our partners' ability to:

- Focus limited capacity and resources in strategic locations, working across public and private lands.
- Enhance the diversity and health of habitat in the landscape using a holistic approach that considers the entire system, versus individual species or habitat types, over a long time-span (e.g. 10-20+ years).
- Integrate forest restoration efforts with bird conservation objectives.
- Enhance forest health and structure to benefit a diversity of wildlife.



# FOCAL LANDSCAPES IN ACTION

## *Cumberlands Focal Landscape*



Photo by Mike Parr

## GOALS AND PRIORITIES

The overall goal of work within this focal landscape in Kentucky and Tennessee is to promote a healthy forest landscape in the Cumberlands region, including a variety of forest types and associated habitats necessary to sustain populations of priority wildlife species.

### Forest Types:

- Oak-hickory forests
- Open pine communities

### Associated Habitats:

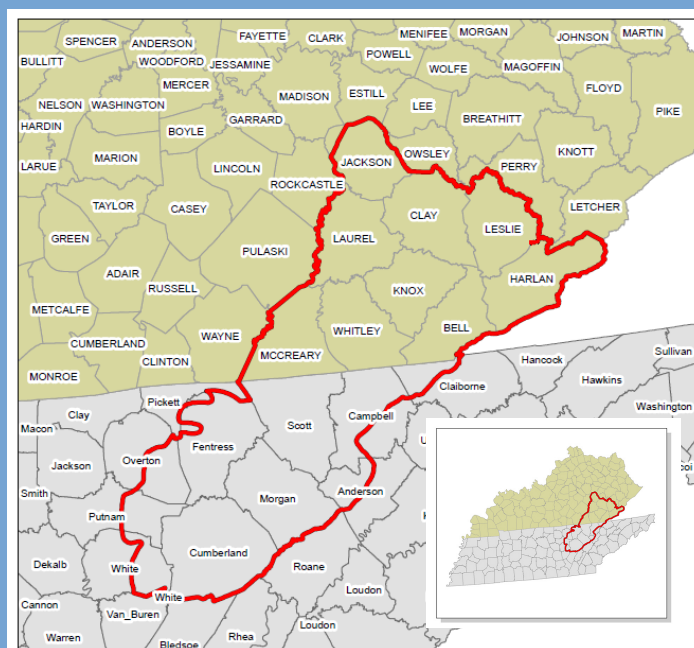
- Wetland communities
- Reclaimed minelands (grasslands)
- Riparian/Aquatic systems

### Priorities for this work include:

- Implementing on-the-ground projects for active forest management, restoration, and protection.
- Promoting management activities to control and reduce impacts from invasive species.
- Conducting monitoring and research activities that will help track our progress and improve our effectiveness.

## PRIORITY SPECIES

Priority species for work in this focal landscape include birds, such as Golden-winged Warbler, Cerulean Warbler, and Swainson's Warbler, but also species of reptiles, fish, mammals, and insects.



## FOCAL LANDSCAPE PARTNERS

**Kentucky Dept. of Fish and Wildlife Resources and Tennessee Wildlife Resources Agency** are lead partners for this focal landscape. Other partners include:

- KY Natural Resources Conservation Service
- The Nature Conservancy
- Eastern KY University
- University of Tennessee
- US Forest Service
- Ruffed Grouse Society
- National Wild Turkey Federation
- KY Natural Lands Trust
- The White Oak Initiative
- KY State Nature Preserves
- US Fish and Wildlife Service
- University of Kentucky Cooperative Extension Service



540-951-9376 | [tfearer@abcbirds.org](mailto:tfearer@abcbirds.org) | [www.amjv.org](http://www.amjv.org)